

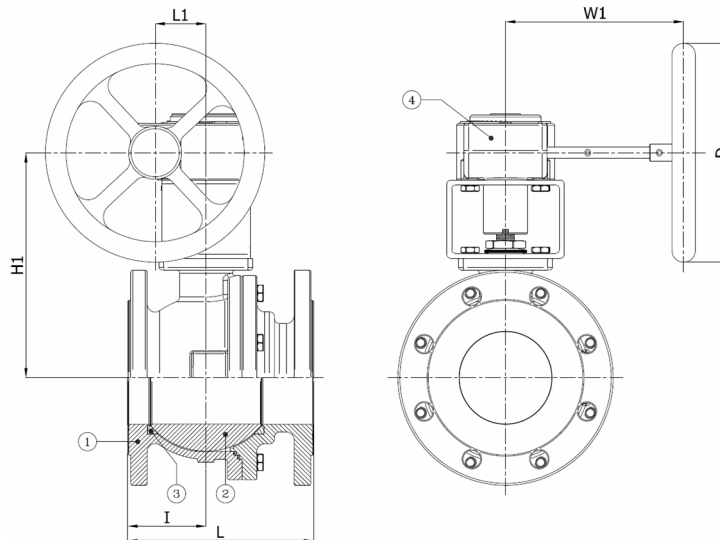
Technical Product Sheet

BV4-4466T-PN10/PN16/PN40 - Aluminium Gearbox

Ball valve, full bore, split body, flanged PN10/PN16/PN40, with Rotork gearbox
Face to Face Standard: EN 558-1 series 27



| Item Number | Belven Ref. |
|-------------|--------------------------------|
| 043D57F5015 | BV4-4466T-PN40-DN015 - GEARBOX |
| 043D57F5020 | BV4-4466T-PN40-DN020 - GEARBOX |
| 043D57F5025 | BV4-4466T-PN40-DN025 - GEARBOX |
| 043D57F5032 | BV4-4466T-PN40-DN032 - GEARBOX |
| 043D57F5040 | BV4-4466T-PN40-DN040 - GEARBOX |
| 043D57F5050 | BV4-4466T-PN40-DN050 - GEARBOX |



| DN/Size | L | H1 | I | L1 | W1 | D | Press.Cl. | Weight(kg) |
|----------------|-----|-----|------|----|-----|-----|-----------|------------|
| DN015 (1/2") | 115 | 110 | 49 | 45 | 119 | 100 | PN40 | 4.70 |
| DN020 (3/4") | 120 | 115 | 51 | 45 | 119 | 100 | PN40 | 5.40 |
| DN025 (1") | 125 | 132 | 54 | 45 | 119 | 100 | PN40 | 6.80 |
| DN032 (1 1/4") | 130 | 136 | 55 | 45 | 119 | 100 | PN40 | 8.20 |
| DN040 (1 1/2") | 140 | 164 | 51,5 | 46 | 166 | 125 | PN40 | 10.20 |
| DN050 (2") | 150 | 169 | 57,5 | 46 | 166 | 125 | PN40 | 13.90 |

| Item 1 | Item 2 | Item 3 | Item 4 |
|-----------------------------|--|---------------|-------------------|
| Body Material | Ball Material | Seat Material | Actuator Material |
| Carbon steel : 1.0619 (WCB) | Stainless steel : A182-F304 / A351-CF8 | PTFE | Aluminium |

Belven N.V.

Blokhuisstraat 24 | 2800 Mechelen | Belgium
Tel. 015 29 40 70 | Fax. 015 20 14 13 | info@belven.com | www.belven.com

We keep the right to change the mentioned dimensions, weights, values and materials at any time without prior or direct notice.