

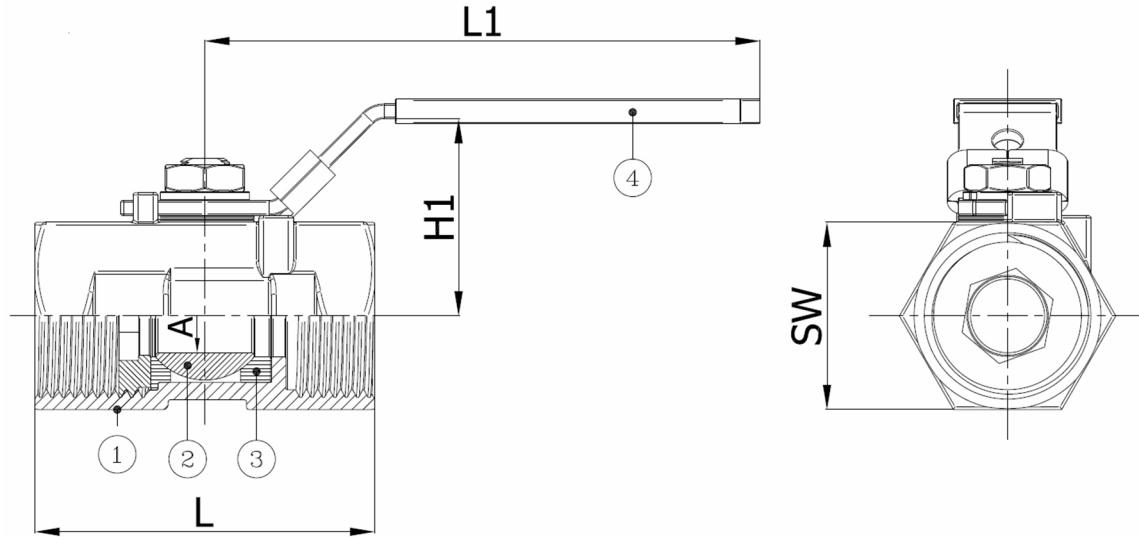
Technical Product Sheet

BV1-6666T-LD-NPT

Ball valve with 1-pce body, reduced bore, NPT threaded F/F ANSI B1.20.1, with lockable lever
Face to Face Standard: Factory standard



Item Number	Belven Ref.
016377T1008-A	BV1-6666T-LD-NPT - 1/4" - LEVER
016377T1010-A	BV1-6666T-LD-NPT - 3/8" - LEVER
016377T1015-A	BV1-6666T-LD-NPT - 1/2" - LEVER
016377T1020-A	BV1-6666T-LD-NPT - 3/4" - LEVER
016377T1025-A	BV1-6666T-LD-NPT - 1" - LEVER
016377T1032-A	BV1-6666T-LD-NPT - 1 1/4" - LEVER
016377T1040-A	BV1-6666T-LD-NPT - 1 1/2" - LEVER
016377T1050-A	BV1-6666T-LD-NPT - 2" - LEVER



DN/Size	L	H1	A	L1	SW	Press.Cl.	Weight(kg)
DN008 (1/4")	38,7	22,1	5	64,4	17,1	1000 WOG	0.06
DN010 (3/8")	44,2	23,6	7	76,5	20,7	1000 WOG	0.10
DN015 (1/2")	55,6	30,4	9	93,5	24,8	1000 WOG	0.16
DN020 (3/4")	62,1	33,7	12,5	93,5	31,4	1000 WOG	0.25
DN025 (1")	68,9	40,1	15	111,3	38,2	1000 WOG	0.41
DN032 (1 1/4")	78,2	44,5	20	111,3	47	1000 WOG	0.61
DN040 (1 1/2")	86	50,5	24,5	139	53	1000 WOG	0.86
DN050 (2")	102,7	56,6	32	139	65,2	1000 WOG	1.38

Item 1	Item 2	Item 3	Item 4
Body Material	Ball Material	Seat Material	Actuator Material
Stainless steel : A351 CF8M	Stainless steel : A351 CF8M/A182-F316	PTFE	Stainless steel : AISI 201 (EN1.4372)

Belven N.V.

Blokhuisstraat 24 | 2800 Mechelen | Belgium
Tel. 015 29 40 70 | Fax. 015 20 14 13 | info@belven.com | www.belven.com

We keep the right to change the mentioned dimensions, weights, values and materials at any time without prior or direct notice.